



RECP #: 752632

RECORDED 5/8/2019 AT 1:09 PM BK# 2620 PG# 1674
Debra K. Lee, CLERK OF LARAMIE COUNTY, WY PAGE 1 OF 1

STATE OF WYOMING CORNER RECORD

(In compliance with the CORNER PERPETUATION AND FILING ACT, Wyoming Statutes, 1997 Section 33-29-140, et. seq., and the Rules and Regulations of the Board of Registrations for Professional Engineers and Professional Land Surveyors)

SOUTHWEST CORNER SECTION 1, T. 18 N., R. 64 W., 6TH P.M., LARAMIE COUNTY, WYOMING

GLO: SET A SANDSTONE 18X12X5, 12IN. DEEP, MARKED WITH 5 NOTCHES ON S. SIDE AND 1 NOTCH ON E. SIDE FOR COR. TO SEC'S 1, 2, 11, 12

FOUND: FIRM SET SANDSTONE, APPROX. 10X8X3, NO MARKINGS FOUND, 0.3' ABOVE SURFACE DIRECTLY IN EAST AND WEST FENCE LINE, 28' WEST OF N/E/W FENCE COR. AND 40' NORTH OF CENTER LINE COUNTY ROAD.

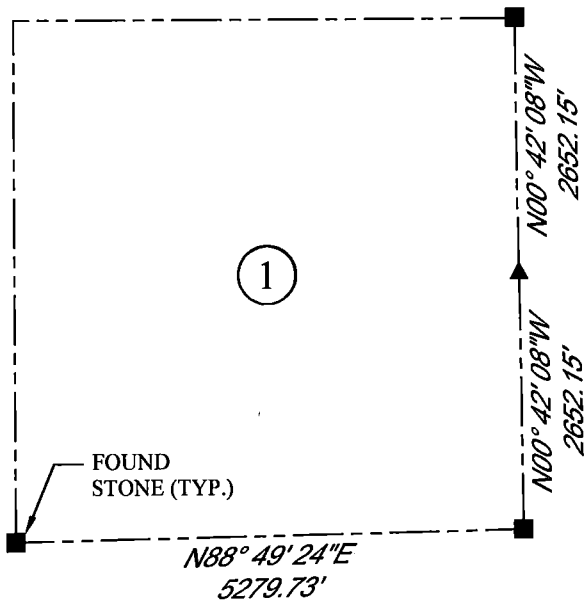


SCALE: NONE
NORTH DETERMINED BY
G.P.S OBSERVATIONS

FOUND FIRM SET SANDSTONE WITH NO MARKINGS
SET NOTHING



DATE OF FIELD WORK: 8/15/2018 OFFICE REFERENCE: MERIDEN



LEGEND:

- FOUND BLM CAP
- FOUND USFS CAP
- FOUND STONE
- FOUND PRIVATE MONUMENT
- ◆ CALCULATED POSITION
- ▲ SET MONUMENT (LS10245)
- SECTION LINE

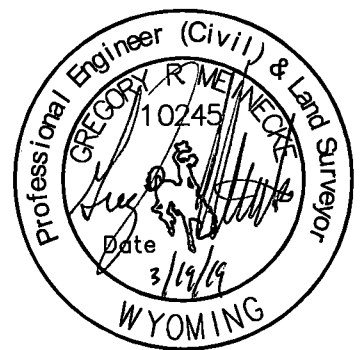
CROSS INDEX DIAGRAM

A	1	2	3	4	5	6	7	8	9	10	11	12	13	14	15	16	17	18	19	20	21	22	23	24	25	A	
B																										B	
C		6					5					4					3							2			C
D																											D
E																											E
F																											F
G																											G
H																											H
J																											J
K																											K
L																											L
M																											M
N																											N
O																											O
P																											P
Q																											Q
R																											R
S																											S
T																											T
U																											U
V																											V
W																											W
X																											X
Y																											Y
Z																											Z

WOOD
2615 AVIATION DRIVE
SHERIDAN, WY 82801
PH: 307-675-6400



THIS CORNER RECORD WAS
PREPARED BY ME OR UNDER
MY DIRECTION AND
SUPERVISION,
SEAL AND SIGNATURE



CORNER NAME: SOUTHWEST SECTION: 1 T. 18 N., R. 64 W. ; 6TH P.M. CROSS-INDEX # E-21
SBRPELS/PLSW: MARCH 1994; PLSW JANUARY 1998